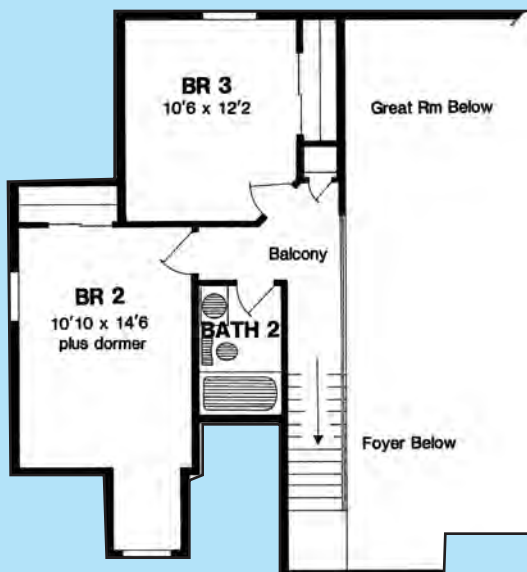




Front Elevations may vary depending on location.



The Wilson

A Step up in value for price!

- 3 Bedroom, 2.5 Baths
- 2 Car Garage
- Vaulted Ceiling Great Room,
Kitchen & Foyer
- Stepped Ceiling Dining Room
- Study with Bay
- Covered Porch
- Stone Exterior Accents



Graywood Custom Homes

585-248-5570 or
585-738-8889